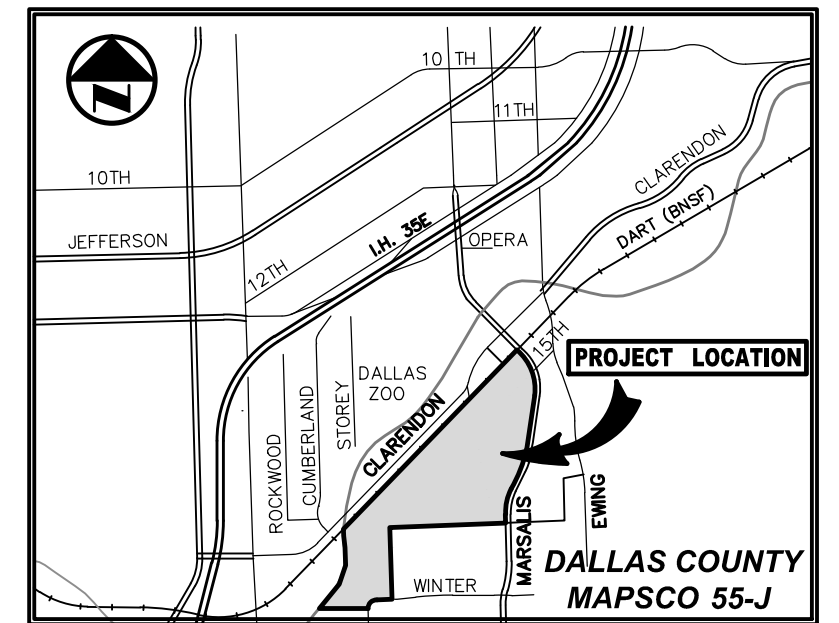
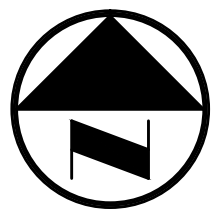


NOTES

1. Bearing system for this survey is based on the State Plane Coordinate System, Texas North Central Zone (4202), North American Datum of 1983 (NAD83).
2. Coordinates shown are based on the State Plane Coordinate System, Texas North Central Zone (4202), North American Datum of 1983 (NAD83). Grid Coordinate values, no scale and no projection.
3. The purpose of this plat is to create one lot from platted and unplatted deeded property for future development.
4. Lot to Lot drainage will not be allowed without engineering section approval.
5. Buildings and structures will remain on site as needed.



VICINITY MAP
(NOT TO SCALE)

LEGEND

- ACB A/C UNIT
- B BOLLARD
- CO CLEANOUT
- ELEC ELECTRIC BOX
- EM ELECTRIC METER
- FH FIRE HYDRANT
- FP FLAG POLE
- FL FLOOD LIGHT
- GAS GAS MANHOLE
- GUY GUY ANCHOR
- HH HAND HOLE (TYPE UNKNOWN)
- HE HAND HOLE ELECTRIC
- ICV IRRIGATION CONTROL VALVE
- LS LIGHT STANDARD
- MH MANHOLE (TYPE UNKNOWN)
- PP POWER POLE
- PP W/ LIGHT
- PP W/ GUY ANCHOR
- TR TRAFFIC SIGN
- SS SAN. SEWER MANHOLE
- TEL TELEPHONE BOX
- TSP TRAFFIC SIGNAL POLE
- STM STORM SEWER MANHOLE
- TEL TELEPHONE MANHOLE
- VENT
- WM WATER METER
- WV WATER VALVE
- 3 1/4 INCH ALUMINUM DISK
- DISK STAMPED "PACHECO KOCH" AND "WILDS OF AFRICA" SET
- PFC POINT FOR CORNER
- (C.M.) CONTROLLING MONUMENT
- M.R.D.C.T. MAP RECORDS OF DALLAS COUNTY, TEXAS
- D.R.D.C.T. DEED RECORDS OF DALLAS COUNTY, TEXAS
- O.P.R.D.C.T. OFFICIAL PUBLIC RECORDS OF DALLAS COUNTY, TEXAS
- PROPERTY LINE
- EASEMENT LINE
- FENCE
- OH OVERHEAD UTILITY LINE
- HR HAND RAIL
- GR GUARD RAIL
- UE UNDERGROUND ELECTRIC LINE
- UT UNDERGROUND TELEPHONE LINE
- UC UNDERGROUND CABLE LINE
- UG UNDERGROUND GAS LINE
- W WATER LINE
- 6"SS SANITARY SEWER LINE
- SD STORM DRAIN LINE
- 61.3- EXIST CONTOUR

PRELIMINARY
THIS DOCUMENT SHALL NOT BE RECORDED FOR ANY PURPOSE AND SHALL NOT BE USED OR VIEWED OR RELIED UPON AS A FINAL SURVEY DOCUMENT.
RELEASED 7/27/15.

PRELIMINARY PLAT

**WILDS OF AFRICA
LOT 1, BLOCK 3442**

BEING PART OF CITY BLOCKS 3442, AND 3753,
PART OF THOMAS' SOUTH OAK CLIFF ADDITION,
PART OF J. OAK SMITH'S SUBDIVISION AND
PART OF T.J. OLIVERS SUBDIVISION
AND BEING OUT OF THE
WILLIAM H. HORD SURVEY, ABSTRACT NO. 560
AND THE
THOMAS MCDOWELL SURVEY, ABSTRACT NO. 875,
CITY OF DALLAS, DALLAS COUNTY, TEXAS
CITY PLAN FILE NUMBER: S145-246
ENGINEERING PLAN NUMBER: 3111-

SHEET 3 OF 5

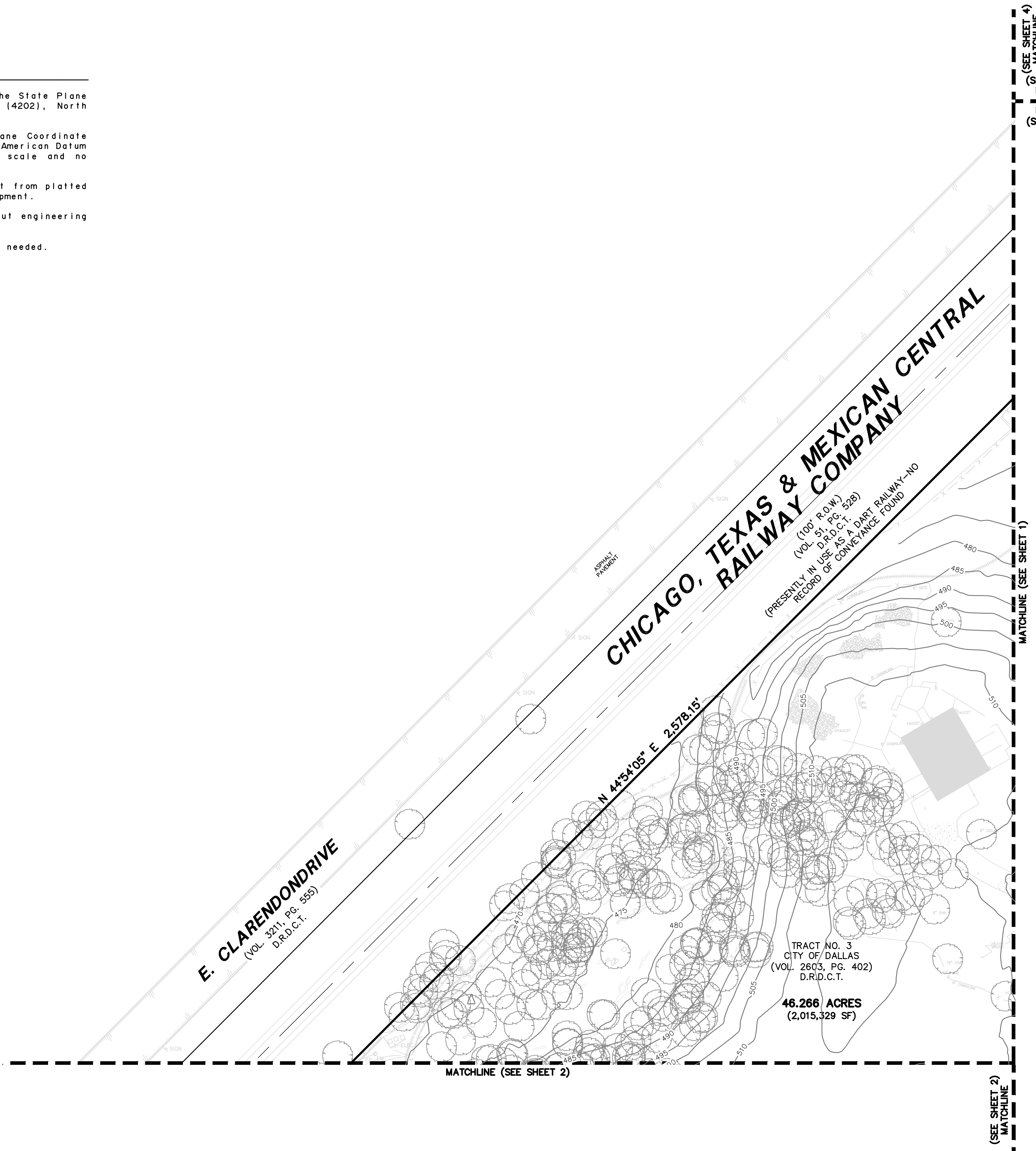
Pacheco Koch		8350 N. CENTRAL EXPWY, SUITE 1000 DALLAS, TX 75206 972.235.3031	
DALLAS • FORT WORTH • HOUSTON TX REG. SURVEYING FIRM LS-10008000		TX REG. ENGINEERING FIRM F-469	
DRAWN BY GMP	CHECKED BY MCC	SCALE 1"=50'	DATE JULY 2015
		JOB NUMBER 2499-14.448	

SURVEYOR:

PACHECO KOCH CONSULTING ENGINEERS
8350 N. CENTRAL EXPWY, SUITE 1000
DALLAS, TEXAS 75206
CONTACT: MICHAEL CLOVER
PHONE: (972) 235-3031

OWNER:

CITY OF DALLAS
650 S. R.L. THORNTON FRWY.
DALLAS, TEXAS 75203
CONTACT: DOUG DYKMAN
PHONE: (469) 554-7540



MFC:CE 07/27/15 8:43AM M:\DWG-24\2499-14.448\DWG\SURVEY\CSD_2012\2499-14.448PP.DWG

WILDS OF AFRICA - PRELIMINARY PLAT